

# Sow, Grow and Farm - Spring Term, Years 5 & 6

## Home learning ideas and topic information.

### WHITE ROSE MATHS HOME LEARNING

#### Your Y5 child can choose from:

Statistics, Multiplication & Division or Perimeter & Area:

<https://whiterosemaths.com/homelearning?year=year-5&term=autumn>

#### Your Y6 child can choose from:

Multiplication & Division, Fractions or Position & Direction.

<https://whiterosemaths.com/homelearning?year=year-6&term=autumn>

### Writing:

Newspaper reports

Non-chronological reports

### Spelling focus:

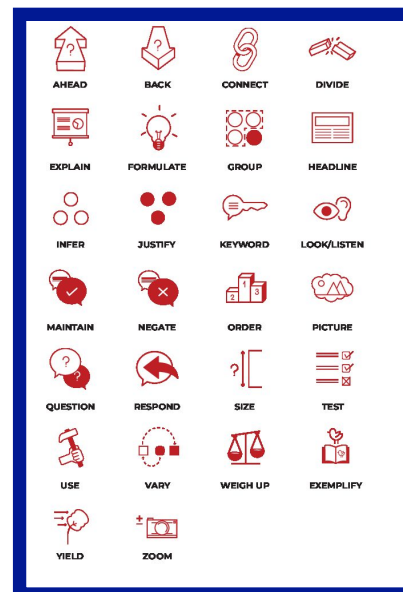
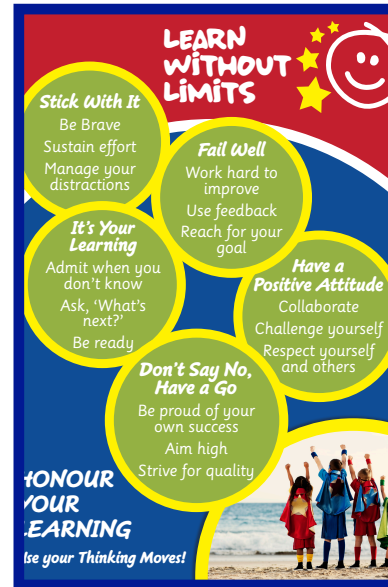
Silent Letters

'ough' words

-able & -ible

-ant & -ent

Ask your child about the 'Active Learn' website, get them to show you how they can log in and practise at home!



## Topic

Please see the attached home learning ideas. Our school focus is:

### Science: Human Reproduction and Ageing -

Animal life cycles, including the human life cycle. Exploring human growth & development to old age, including the changes experienced during puberty & human reproduction.

### P.E. Athletics, Tag Rugby & Swimming

Art. Line, Light and Shadows - The visual qualities of line, light and shadow. We will explore the work of Pablo Picasso & Rembrandt and will introduce a range of shading techniques.

Nature's Art - the genre of land art. Sketch natural forms and explore the sculptural potential of natural materials before working collaboratively to create land art installations.

### Geography. Sow, Grow and Farm -The

features and characteristics of land use in agricultural regions across the world, including a detailed exploration of significant environmental areas.

### Music. Rhythm and Duration

R.E. Holi - A Hindu Celebration

Passover - A Jewish Festival

# Sow, Grow and Farm - Spring Term, Years 5 & 6